

Protection Circuit Module Specifications For 37V Li-ion/Li-Po Battery Pack

Model: PCM-L10S10-C19 (LI-10S)

| No. | Test item (Test at normal temperature 25±2℃ and relative humidity≤90%) | | Criterion |
|-----|---|---|----------------------------|
| 1 | Communication Interface | | HDQ or I2C |
| 2 | Capacity | Designing battery capacity | 8500mAh |
| | | Designing battery capacity | 8500mAh |
| | | Max capacity (Battery pack) | 320000mAh |
| | | Min capacity (Battery pack) | 800mAh |
| | | External capacity Indication | |
| | | Gas gauge algorithm | Impedance Track |
| 3 | Voltage | Charging voltage | DC: 37V CC/CV (4.2V/1cell) |
| | | Balance voltage for single cell | 4.2±0.05V |
| 4 | Current | Balance current for single cell | 68±10mA |
| | | Normal operating-mode current; Gas Gauge in NORMAL mode,ILOAD > Sleep Current | 160 uA |
| | | SLEEP operating-mode current; Gas Gauge in SLEEP mode,ILOAD < Sleep Current | 80 uA |
| | | FULL SLEEP operating-mode current; Gas Gauge in FULL SLEEP mode,ILOAD < Sleep Current | 25 uA |
| | | Maximal continuous charging current | 10A |
| | | Maximal continuous discharging current | 10A |
| 5 | Over charge Protection | Over charge detection voltage | 4.25±0.05V |
| | | Over charge detection delay time | 0.5S—2S |
| | | Over charge release voltage | 4.05±0.1V |
| 6 | Over discharge protection | Over discharge detection voltage | 2.75±0.1V |
| | | Over discharge detection delay time | 10—30mS |
| | | Over discharge release voltage | 3.0±0.1V |
| 7 | Over current protection | Over current detection current | 40±5A |
| | | Detection delay time | 5ms—60ms |
| | | Release condition | Cut load |
| 8 | Short protection | Detection condition | Exterior short circuit |
| | | Detection delay time | 200-800us |
| | | Release condition | Cut load |
| 9 | Resistance | Protection circuitry | ≤50m Ω |
| 10 | Temperature | Operating Temperature Range | -40~+85℃ |
| | | Storage Temperature Range | -40~+125℃ |

B+: Battery+

B-: Battery-

SDA: Serial Data interface

SCL: Serial Clock interface

HDQ: Open drain HDQ Serial communication line (slave)

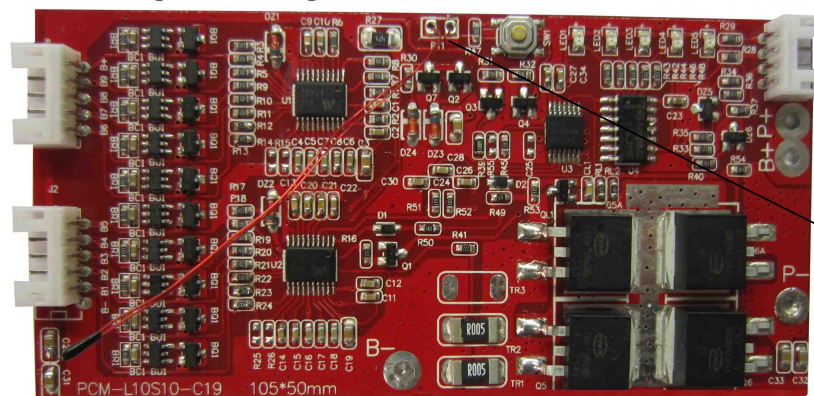
P+: Charge+/discharge+

P-: Charge-/discharge-

P+=B+=Charge+/Discharge+

P- =Charge-/Discharge-

Size:L105*W50*T8mm



10K NTC

