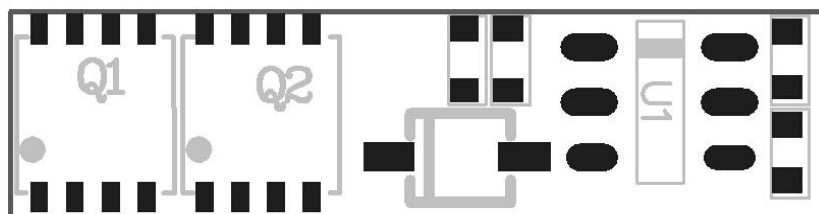


Protection Circuit Module Specifications For 3.7V Li-ion Battery Packs

Model: PCM-L01S06-264 (1S)

No.	Test item		Criterion
1	Voltage	Charging voltage	DC:4.2V CC/CV
		Balance voltage for single cell	/
2	Current	Balance current for single cell	/
		Low Current consumption	$\leq 7\mu\text{A}$
		Maximal continuous charging current	5A
		Maximal continuous Discharging current	5A
3	Over charge Protection	Over charge detection voltage	$4.25\pm 0.025\text{V}$
		Over charge detection delay time	0.5S—2S
		Over charge release voltage	$4.05\pm 0.05\text{V}$
4	Over discharge protection	Over discharge detection voltage	$2.50\pm 0.062\text{V}$
		Over discharge detection delay time	10mS—200mS
		Over discharge release voltage	$2.5\pm 0.1\text{V}$
5	Over current protection	Over current detection current	$8.5\pm 2\text{A}$
		Detection delay time	10ms—20ms
		Release condition	Cut load
6	Short protection	Detection condition	Exterior short circuit
		Detection delay time	150-540us
		Release condition	Cut load
7	Resistance	Protection circuitry	$\leq 60\text{m}\Omega$
8	Temperature	Operating Temperature Range	$-40\sim +85^{\circ}\text{C}$
		Storage Temperature Range	$-40\sim +125^{\circ}\text{C}$

Size: L15*W3.7*T1.2 mm



Connection diagram as a reference,
pls refer to real sample.